

LILLIPUT®

1920×1200 Resolution, 1500 nits brightness, 12G-SDI and HDMI 2.0

10.1" HDMI2.0 / 2×12G-SDI

ULTRA HIGH BRIGHTNESS ON-CAMERA MONITOR



1500 NITS



12G-SDI
HDMI2.0



HDR
3D-LUT



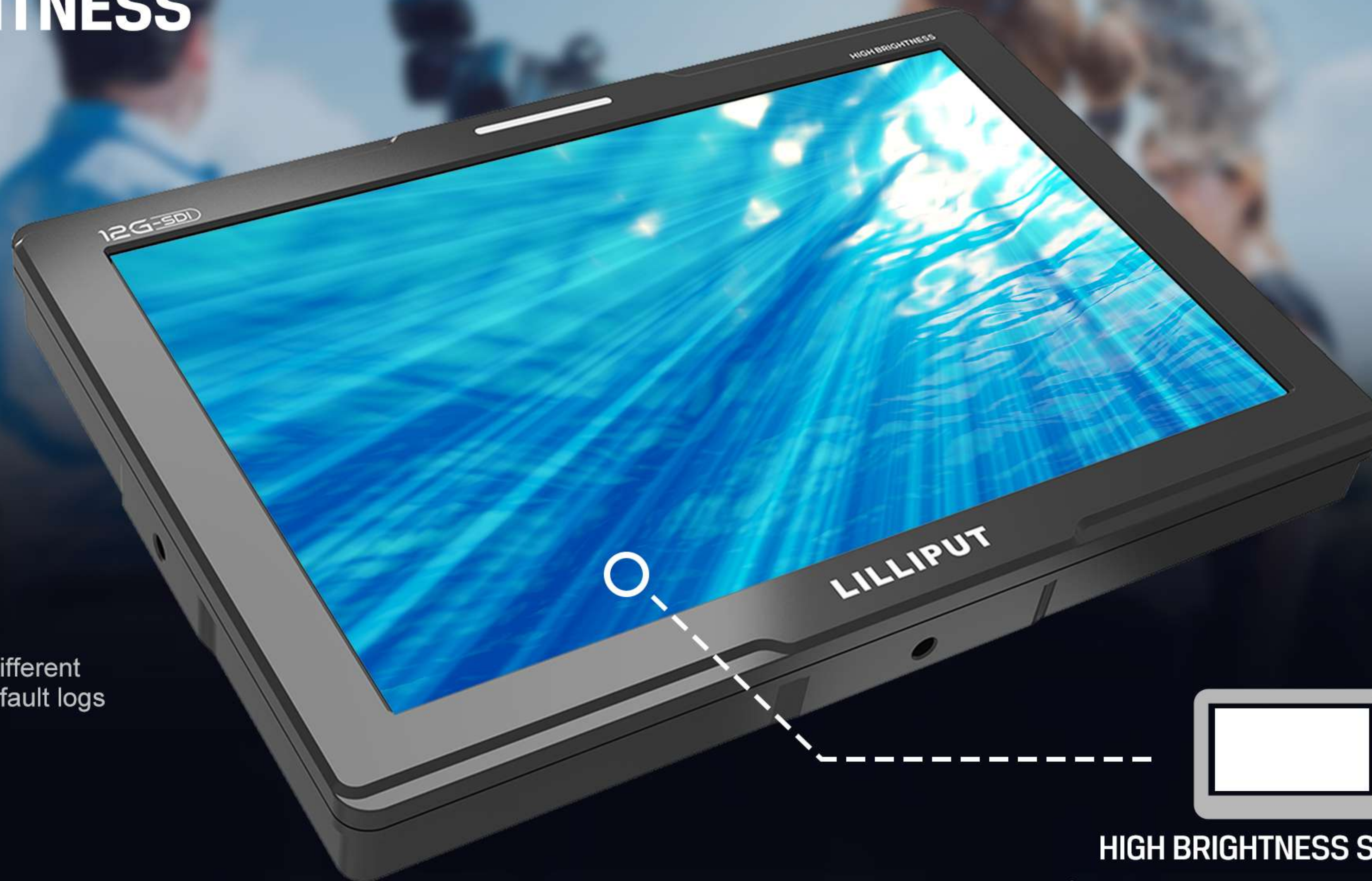
ALUMINUM CNC



Q10

1500 NITS

ULTRA HIGH BRIGHTNESS



3D-LUT

It can quickly recombine color tone to form different color styles. Built-in 3D-LUT, featuring 17 default logs and 6 user logs.

HDR

Allowing lighter and darker details to be displayed more clearly. Support ST2084 300 / 1000 / 10000 / HLG.

HIGH BRIGHTNESS SCREEN

Featuring an amazing 1500 nits LCD screen, with the sun readability therefore the gear suitable for any innovative outdoor framing. Mounted on top of the camera, to make it the "Brightest Scenery".



12G-SDI BROADCAST

It is possible to receive 2× 12G-SDI signals and display through PIP / PBP function, it can be of assistance when having multiple video signals.



Equipped with 12G-SDI input/output interfaces, it can support up to 4096×2160 60p & 3840×2160 60p signal.



HDMI 2.0 VIDEO SHOOTING

Supports HDMI signals up to 4K 60Hz which is compatible with the latest DSLR cameras on the market with an HDMI 2.0 interface.



Equipped with HDMI 2.0 input/output interfaces, it can support up to 4096×2160 60p & 3840×2160 60p signal.



12G-SDI MULTIVIEW PIP / PBP

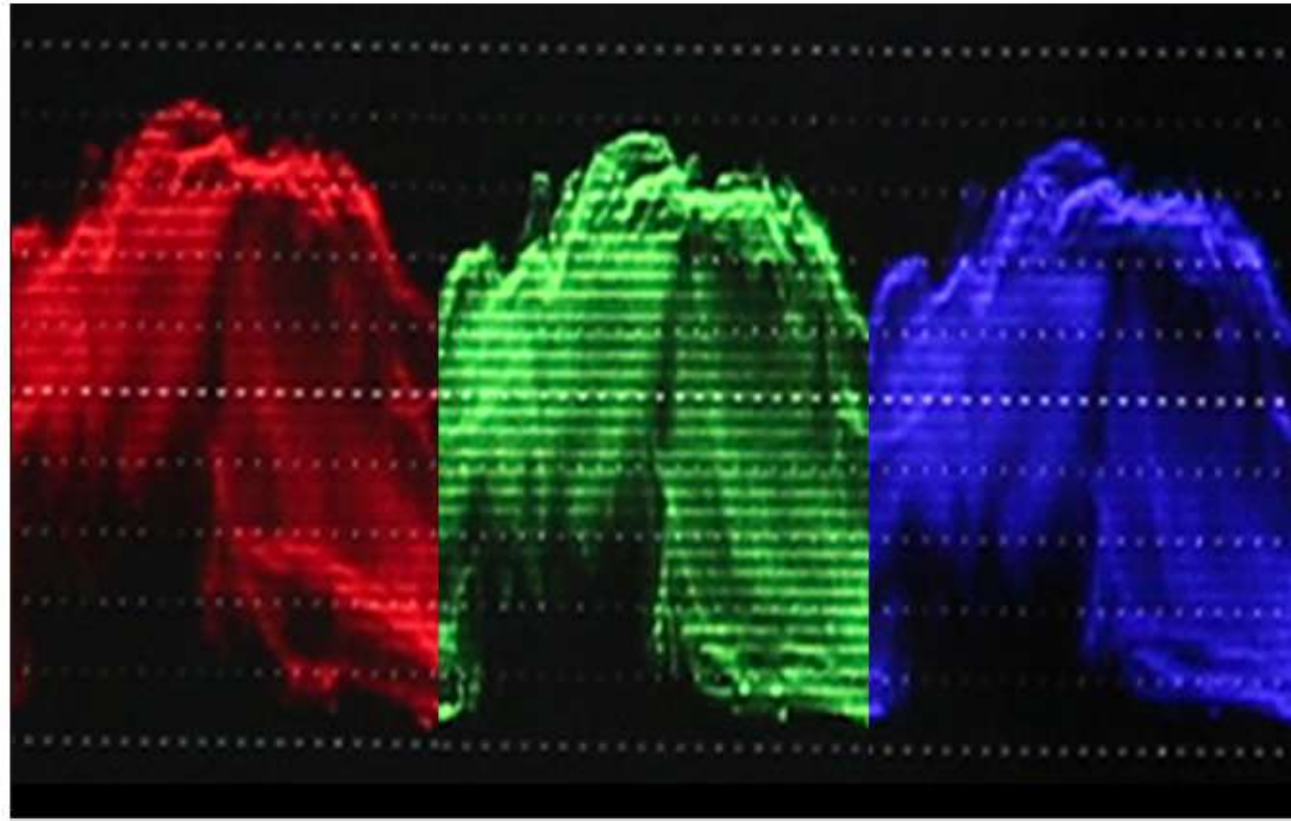
The monitor is equipped with two 12G-SDI input video signal interfaces, so it is logical that two video signals can be monitored at the same time. Users can choose to use PIP or PBP depending on their needs.



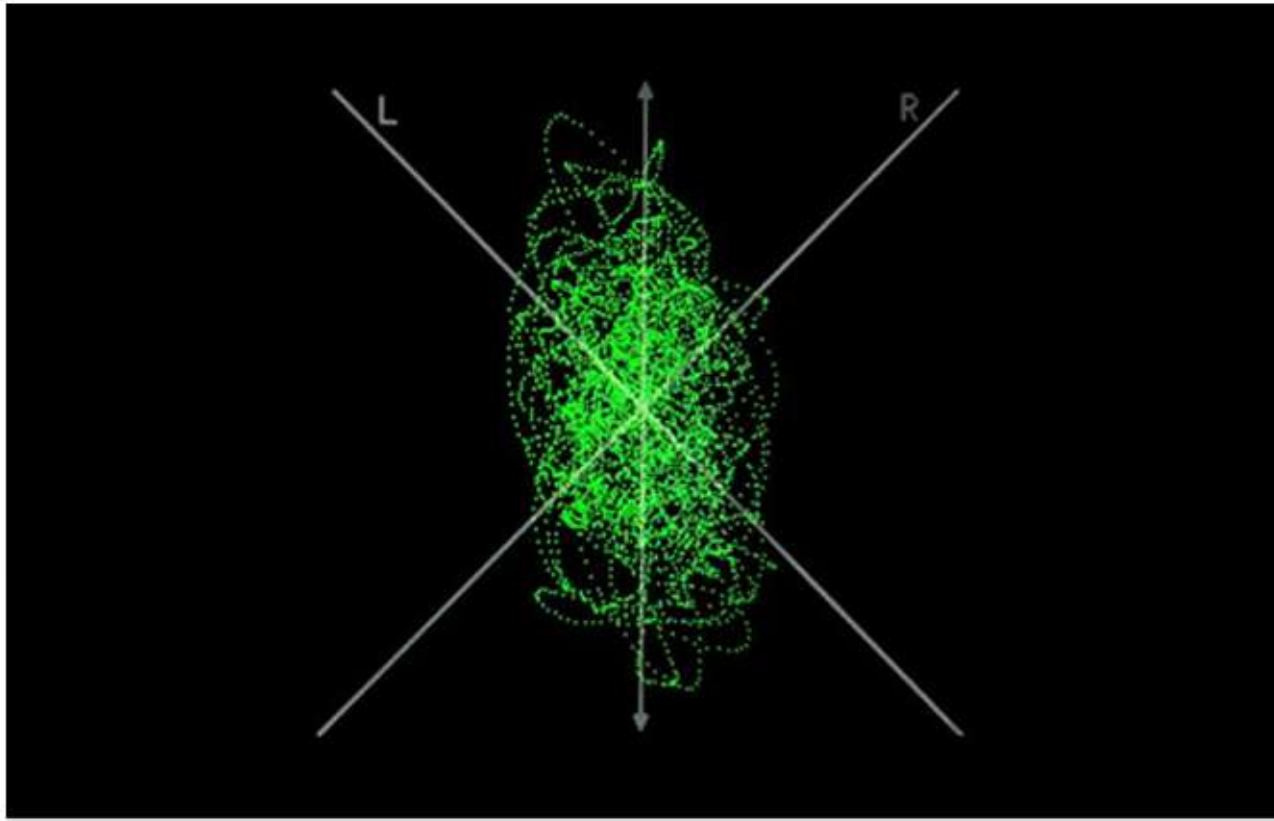
Multiview mode/PIP



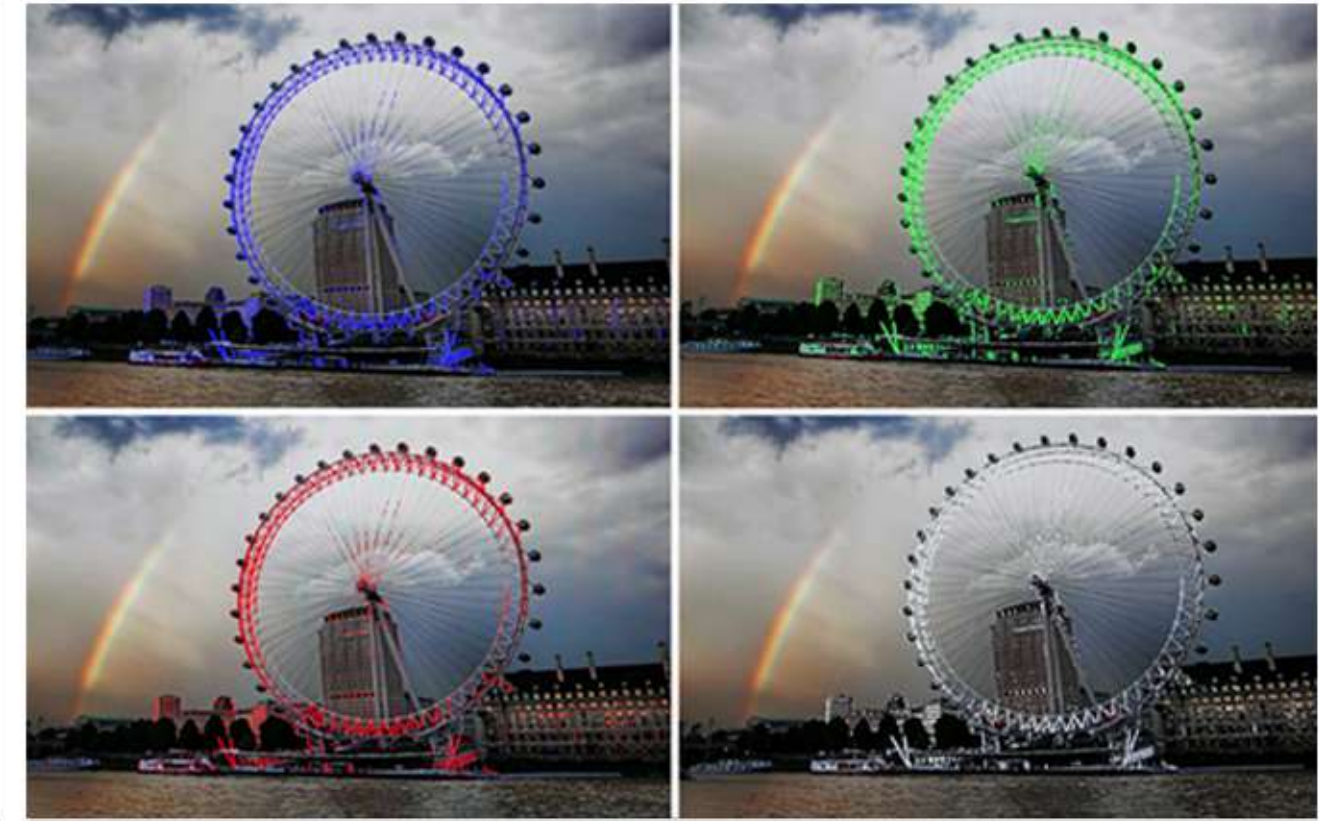
Multiview mode/PBP



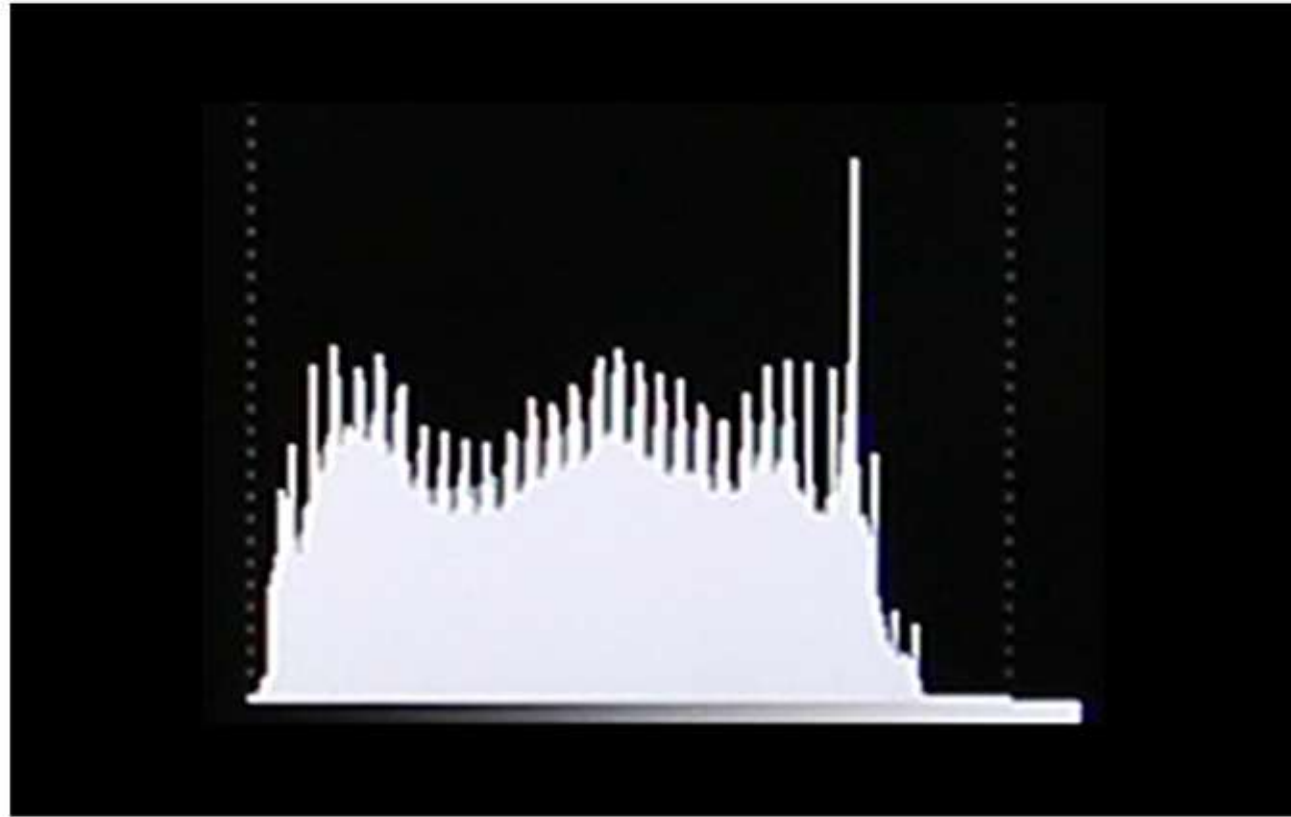
WAVEFORM
(FULL SCREEN)



AUDIO VECTOR
(FULL SCREEN)



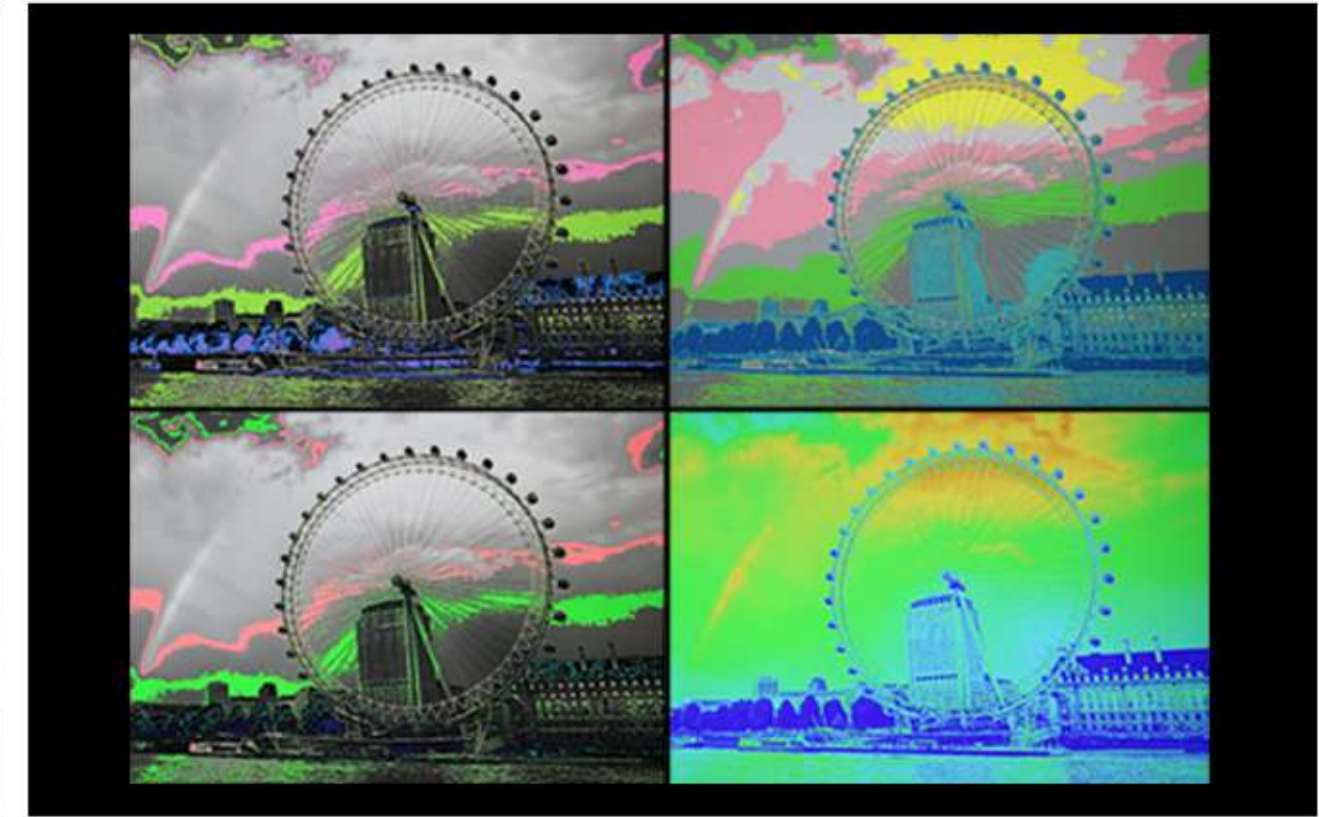
PEAKING



HISTOGRAM
(FULL SCREEN)



LEVEL METER



FALSE COLOR

Camera Auxiliary Functions



PBP



PIP



Color Temp



Color Gamut



3D-LUT



HDR



Vector scope



Waveform



Audio Vector



Level meter



Histogram



Exposure



Peaking



False color



Check field



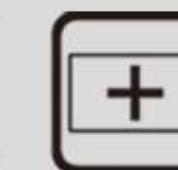
Color bar



Pixel zoom



Pix to pix



Marker

SPECIFICATIONS

DISPLAY	Panel	10.1"
	Physical Resolution	1920×1200
	Aspect Ratio	16:10
	Brightness	1500 nits
	Contrast	1000:1
	Viewing Angle	170°/ 170°(H/V)
	HDR	ST2084 300/1000/10000/HLG
	Supported Log formats	SLog2 / SLog3 / CLog / NLog / ArriLog / JLog or User...
	Look up table (LUT) support	3D LUT (.cube format)
SIGNAL INPUT	SDI	2×12G-SDI
	HDMI	1×HDMI 2.0
	Tally	1
SIGNAL LOOP OUTPUT	SDI	2×12G-SDI
	HDMI	1×HDMI 2.0
SUPPORT FORMATS	SDI	2160p 60/50/30/25/24, 1080p 60/50/30/25/24, 1080pSF 30/25/24, 1080i 60/50, 720p 60/50...
	HDMI	2160p 60/50/30/25/24, 1080p 60/50/30/25/24, 1080i 60/50, 720p 60/50...
AUDIO IN/OUT	SDI	16ch 48kHz 24-bit
	HDMI	8ch 24-bit
	Ear Jack	3.5mm
	Built-in Speakers	1
POWER	Input Voltage	DC 7-24V
	Power Consumption	≤37W (12V)
ENVIRONMENT	Operating Temperature	0°C~50°C
	Storage Temperature	-20°C~60°C
OTHER	Dimension(LWD)	251mm × 170mm × 30.5mm
	Weight	1.1kg



ACCESSORIES

STANDARD



12V 3A DC Power Adapter



Suitcase



U-shaded Bracket



VESA 75 mm Battery Plate
(For Sony NP-F Series)



Tally Connector



OPTIONAL UNIT



Default

or

V-Lock / AB Battery Plate

